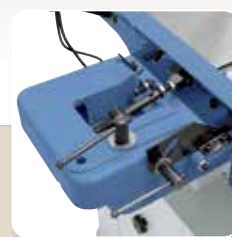


BERNARDO®

www.bernardo.at

03/2022

PLANING MACHINES



PT 200
PT 200 ED
PT 250
PT 305

PT 260
ADH 250 P
ADM 260
ADM 260 S
AD 260
AD 260 S
PT 305 D
FS 310 P
FS 310 PS
PT 310

PT 310 S
ADM 300 / 300 V
AD 310
AD 310 S
FS 410 N
PT 410
PT 410 S
AD 410
AD 410 S
SP 150 P

SP 150 PS
SP 200 P
SP 300 S
TH 330
DH 310
DH 310 S
DH 410
DH 410 S
TP 410
TP 630 D

Surface planer and thicknessers

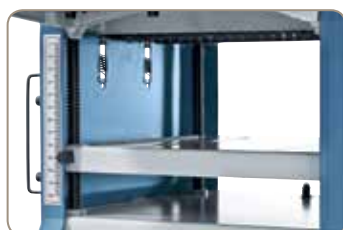
The PT 200 surface planer and thicknesser features a small and compact construction to allow for easy transport and use on different sites.

PT 200

- Cutterblock cover in accordance with CE-standards guarantees high safety
- On/Off switch in accordance with IP 54 features undervoltage release
- Ideal for craftsmen and home users
- Quick and easy setting of chip removal
- Precise aluminium planing tables to achieve high accuracy
- Combined dust hood can be used for planing or thicknessing
- Solid planing fence tilts 90° to 45°
- Precisely bedded 2-knife cutterblock with HSS cutter knives
- Powerful drive motor for optimal planing results
- Attractive price-benefit ratio



Aluminium planing fence can be used from 90° to 45°.



Thicknessing table on four guides, height adjustable on clearly designed scale.

BERNARDO®
www.bernardo.at
HOBBY

Optional accessories:

	Art. no.	excl. VAT
Set of planer knives in HSS-quality (2 pcs.)	15-1067	
Planer knife adjustment HML	08-1500	
Suction canister BDC 1100	12-1999	

Technical data

PT 200

Planer

Planing width	205 mm
Table length	740 mm
Shaft rotation speed	8500 rpm
Cutter knives	2 pcs.
Planer shaft diameter	50 mm
Planer fence	540 x 100 mm
Fence tiltable	90° to 45°
Max. cutting depth	2 mm

Thicknesser

Table length	255 mm
Working width	200 mm
Working thickness, min./max.	8 - 120 mm
Max. cutting depth	2 mm
Feed speed	7 m/min

Dust extraction outlet	60 mm
Motor power output S ₁ 100%	1,25 kW (1,7 HP)
Motor power input S ₆ 40%	1,75 kW (2,3 HP)
Voltage	230 V
Machine dimension (L x W x H)	790 x 460 x 480 mm
Weight approx.	27 kg
Art. no.	08-1005



Combined dust hood can be used for surface planing or thicknessing.



On-Off switch in accordance to IP 54 and separate emergency stop button according to CE standards.

Standard accessories:

- Cutter knives in HSS-quality
- Dust hood
- Knife gauge
- Push handle

**Best
Price**

Surface planer and thicknesser

PT 200 ED

The PT 200 ED planer and thicknesser stands out because of its integrated dust extractor and its large thickening height (210mm). This compact model is solidly constructed, making this machine ideal for amateurs.

- Solid machine structure enables easy transportation, ideal for use on construction sites
- Quick and easy adjustment of chip removal
- Dust extractor and waste bag as standard equipment
- Stable planer fence, tiltable from 90° to 45°
- Precisely manufactured, aluminium planing tables for accurate results
- Power switch according to IP 54 with undervoltage release
- Precisely mounted 2-knife cutterblock incl. cutter knives in HSS-quality
- Cutterblock cover according to CE-standards ensure safety
- Powerful motor guarantees best result
- Ideal for craftsmen and amateurs
- Serially equipped with dust hood when thickening



The planer fence can easily be adjusted from the back of the machine. The desired angle can be read on the scale.



The table is guided on four threads to ensure precise planing of boards, planks etc.



Cutterblock cover according to CE standards.

Working thickness 210 mm and integrated dust extraction

Optional accessories:

	Art. no.	excl. VAT
Set of planer knives in HSS quality (2 pcs.)	15-1067	
Planer knife adjustment HML	08-1500	
Filter bag	97-79439	

Technical data

PT 200 ED

Planer

Planing width	205 mm
Table length	740 mm
Shaft rotation speed	8500 rpm
Cutter knives	2 pcs.
Planer shaft diameter	50 mm
Planer fence	540 x 105 mm
Fence tiltable	90° to 45°
Max. cutting depth	2 mm

Thicknesser

Table length	285 mm
Working width	200 mm
Working thickness, min./max.	5 - 210 mm
Max. cutting depth	2 mm
Feed speed	7 m/min

Dust extraction outlet	60 mm
Motor power output S ₁ 100%	1,5 kW (2,0 HP)
Motor power input S ₆ 40%	2,1 kW (2,8 HP)
Voltage	230 V
Machine dimension (L x W x H)	790 x 480 x 550 mm
Weight approx.	31 kg
Art. no.	08-1006

Standard accessories:

- Cutter knives in HSS-quality
- Dust extractor
- Knife gauge
- Dust hood
- Waste bag
- Push handle

Serially equipped with integrated dust extractor and waste bag.

BERNARDO®
HOBBY



BERNARDO®
www.bernardo.at

Surface planer and thicknesser

The PT 250 surface planer and thicknesser features a small and compact construction to allow for easy transport and use on different sites. This model comes complete with a machine base.

PT 250

- Cutterblock cover in accordance with CE-standards guarantees high safety
- On/Off switch in accordance with IP 54 features undervoltage release
- Ideal for craftsmen and home users
- Quick and easy setting of chip removal
- Precise aluminium planing tables to achieve high accuracy
- Combined dust hood can be used for planing or thicknessing
- Solid planing fence tilts 90° to 45°
- Precisely bedded 2-knife cutterblock with HSS cutter knives
- Powerful drive motor for optimal planing results
- Solid machine structure enables easy transportation, ideal for use on construction sites



Thicknessing table on four guides, height adjustable on clearly designed scale.



The planing tables are designed with slots to keep noise levels to a minimum.

BERNARDO®
www.bernardo.at
HOBBY

Optional accessories:

	Art. no.	excl. VAT
Set of planer knives in HSS-quality (2 pcs.)	15-1071	
Planer knife adjustment HML	08-1500	
Suction canister BDC 1100	12-1999	

Technical data

PT 250

Planer

Planing width	255 mm
Table length	925 mm
Shaft rotation speed	8500 rpm
Cutter knives	2 pcs.
Planer shaft diameter	50 mm
Planer fence	620 x 125 mm
Fence tiltable	90° to 45°
Max. cutting depth	2 mm

Thicknesser

Table length	380 mm
Working width	250 mm
Working thickness, min./max.	5 - 120 mm
Max. cutting depth	2 mm
Feed speed	7 m/min

Dust extraction outlet	75 mm
Motor power output S ₁ 100%	1,5 kW (2,0 HP)
Motor power input S ₆ 40%	2,1 kW (2,8 HP)
Voltage	230 V
Machine dimension (L x W x H)	970 x 460 x 990 mm
Weight approx.	30 kg
Art. no.	08-1007

Aluminium planing fence can be used from 90° to 45°.

Standard accessories:

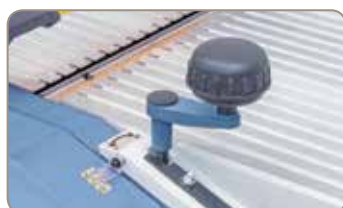
- Cutter knives in HSS-quality
- Dust hood
- Knife gauge
- Push handle
- Stand

Surface planer and thicknesser

The PT 305 compact surface planer and thicknesser features a working thickness of up to 150 mm, making it the ideal model for planing of boards, planks and beams. This compact model is solidly constructed, making this machine ideal for amateurs.

PT 305

- The table is designed with slots on both sides to minimize the noise level
- Quick and easy adjustment of chip removal
- Stable planer fence, tiltable from 90° to 45°
- Precisely manufactured, aluminium planing tables for accurate results
- Precisely mounted 2-knife cutterblock incl. cutter knives in HSS-quality
- Cutterblock cover according to CE-standards ensure safety
- Powerful motor guarantees best result
- Combined dust hood can be used for planing or thicknessing
- Ideal for craftsmen and amateurs
- Thicknessing table is guided on four threads to ensure accurate planing of boards, planks, etc.



Quick and easy adjustment of chip removal (up to 2 mm).



Thicknessing table is guided on four threads. The height can be read on the scale.



Combined dust hood can be used for surface planing or thicknessing.

BEST-PRICE!

Standard accessories:

- Cutter knives in HSS-quality
- Knife gauge
- Dust hood
- Push handle

BERNARDO®
www.bernardo.at
HOBBY

Technical data

PT 305

Planer

Planing width	305 mm
Table length	1075 mm
Shaft rotation speed	9500 rpm
Cutter knives	2 pcs.
Planer shaft diameter	51 mm
Planer fence	640 x 125 mm
Fence tiltable	90° to 45°
Max. cutting depth	2 mm

Thicknesser

Table length	500 mm
Working width	300 mm
Working thickness, min./max.	5 - 150 mm
Max. cutting depth	1 mm
Feed speed	7 m/min

Dust extraction outlet	100 mm
Motor power output S ₁ 100%	1,8 kW (2,4 HP)
Motor power input S ₆ 40%	2,5 kW (3,4 HP)
Voltage	230 V
Machine dimension (L x W x H)	1125 x 560 x 575 mm
Weight approx.	46 kg
Art. no.	08-1009



NEW



Aluminium planing fence can be used from 90° to 45°.

Optional accessories:

Set of planer knives in HSS-quality (2 pcs.)	Art. no.	excl. VAT
Planer knife adjustment HML	15-1074	
Suction canister BDC 1100	08-1500	
	12-1999	

BERNARDO®
www.bernardo.at

For technical requests you can reach us by e-mail at service@pwa.at

Surface planer and thicknesser

PT 260

- Both planing tables feature fine adjustment and are designed with slots to keep noise levels down
- Thicknessing table is guided on four threads to ensure accurate planing of boards, planks, etc.
- Integrated dust extractor guarantees optimal price-performance ratio
- Quick and easy adjustment of chip removal
- Precise planing tables made of aluminium for best results
- Dust hood (Ø 80 mm) can be used for both planing and thicknessing
- Cutterblock comes with HSS-knives
- Corrugated infeed roller ensures safe and consistent workpiece infeed
- Solid planer fence with prism guide can be tilted from 90° to 45°
- Serially equipped with knife gauge to allow accurate adjustment of knives
- Infeed can be switched off when planing



Thicknessing table is guided on four threads. The height can be read on the scale.



The ripped aluminium tables are slotted to reduce noise levels.



The precisely bedded cutterblock and corrugated infeed roller guarantees best planing results.

Integrated dust extraction

Optional accessories:

	Art. no.	excl. VAT
Planer knives 260 x 20 x 2,5 mm, price per pc.	15-1002	
Planer knife adjustment HML	08-1500	
Filter bag	97-80002	
Universal mobile base UF 300	56-1070	

Technical data

PT 260

Planer

Planing width	260 mm
Table length	1050 mm
Table height	885 mm
Shaft rotation speed	6700 rpm
Cutter knives	2 pcs.
Planer shaft diameter	55 mm
Planer fence	610 x 110 mm
Fence tiltable	90° to 45°
Max. cutting depth	3 mm

Thicknesser

Table length	480 mm
Working width	250 mm
Working thickness, min./max.	5 - 150 mm
Max. cutting depth	2 mm
Feed speed	8 m/min

Dust extraction outlet	80 mm
Motor power output S ₁ 100%	1,6 kW (2,1 HP)
Motor power input S ₆ 40%	2,2 kW (3,0 HP)
Voltage	230 V or 400 V
Machine dimension (L x W x H)	1050 x 650 x 1050 mm
Weight approx.	75 kg
Art. no.	08-1022 (230 V) 08-1023 (400 V)



Outfeed table is in upright position when thicknessing

Standard accessories:

- Cutter knives in HSS-quality
- Knife gauge
- Integrated dust extractor
- Waste bag
- Push handle

The PT 260 planer and thicknesser offers a wide range of standard accessories, including an integrated dust extractor, waste bag and knife gauge, making this model unbeatable in price-performance ratio for the price conscious user.

PT 260

Planing machines



The planer fence with prism guide block can be tilted.



BEST-PRICE!

The machine is equipped with many safety devices to eliminate the risk of accidents.



The dust hood can be used for both planing and thicknessing.

BERNARDO®
HOBBY



VOLTAGE

Alternatively in
230 V or 400 V

Serially equipped with integrated dust extractor and filter bag.

BERNARDO®
www.bernardo.at

For your closest dealer, contact us at www.bernardo.at

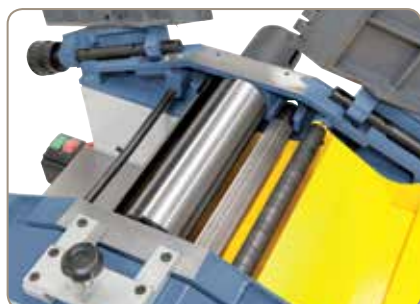
Surface planer and thicknesser

ADH 250 P

- Both planing tables feature fine adjustment and are designed with slots to keep noise level down
- Easy setting of chip removal (max. 2,5 mm)
- Torsion-free planing tables made out of solid cast iron
- Integrated, tiltable dust hood, extraction outlet 100 mm
- Precisely bedded 3-knife cutterblock incl. HSS-cutter knives
- Solid aluminium fence, tiltable from 90° to 45°
- Corrugated infeed rollers and rubber-coated outfeed rollers for optimal workpiece feed
- Workpiece infeed can be switched off when planing
- Tables can be tilted upright to allow easy workpiece infeed when thicknessing
- Thicknessing table with center column and support guarantees precise thicknessing
- Perfect machine for planing of boards, planks, beams etc.



The planing tables are designed with slots to keep noise levels to a minimum.



The planing unit consists of a 3-knife cutterblock, a corrugated infeed roller and rubber-coated outfeed roller.



The solid planer fence with prism guide can be adjusted easily and tilted up to 45°.



The mortiser unit allows slotting and drilling (optional).

Technical data

ADH 250

Planer

Planing width	250 mm
Table length	1090 mm
Table height	830 mm
Shaft rotation speed	4000 rpm
Cutter knives	3 pcs.
Planer shaft diameter	75 mm
Planer fence	715 x 130 mm
Fence tiltable	90° to 45°
Max. cutting depth	5 mm

Thicknesser

Table length	600 mm
Working width	245 mm
Working thickness, min./max.	5 - 185 mm
Max. cutting depth	2,5 mm
Feed speed	4,8 m/min

Dust extraction outlet	100 mm
Motor power output S ₁ 100%	1,5 kW (2,0 HP)
Motor power input S ₆ 40%	2,1 kW (2,8 HP)
Voltage	230 V or 400 V
Machine dimension (L x W x H)	1100 x 750 x 1010 mm
Weight approx.	148 kg
Art. no.	08-1018A (230 V) 08-1019A (400 V)

Standard accessories:

- Cutter knives in HSS-quality
- Knife gauge
- 2 pcs. push handle

Optional accessories:

Cutter knives 250 x 30 x 3 mm, price per pc.	15-1000
Mortising unit	08-1549
Mortising bit set 6 pcs., counterclockwise, 13 mm shaft	16-2003
Dust collector DC 230 E / 230 V with tube (2,5 m)	12-2043
PU-tube diam. 100 mm (6 m)	12-1077
Universal mobile base UF 300	56-1070
Lubricant 1 kg, paste	54-1000

Art. no. excl. VAT

The ADH 250 P planer and thicknesser is ideal for the precise planing of boards and planks. This model features a thicknessing height of 185 mm and the machine can optionally be equipped with a mortising unit for slotting and drilling works.

ADH 250 P



The infeed function can be switched off when planing.



Quick and easy adjustment of chip removal.

**Mortising unit
optionally available**



Foldable planer tables allow quick and easy conversion from planing to thicknessing.

VOLTAGE

Alternatively in
230 V or 400 V



Thicknessing table with center column and support ensure accurate planing.

BERNARDO®
www.bernardo.at

For the most up to date information please visit www.bernardo.at

Surface planer and thicknesser

ADM 260

- Switch-plug-combination with motor brake as standard
- Folding planer tables allow quick and easy conversion from planing to thicknessing
- Integrated, tiltable dust hood, extraction outlet 100 mm
- Both planing tables feature fine adjustment and are designed with table lips to keep noise level down
- Maintenance-free 3-knife cutterblock with HSS 18% quality cutter knives
- Thicknessing table with central column and support allow precise planing
- The solid planer fence with prism guide can be tilted from 90° to 45°
- Torsion-free, cast iron planing tables guarantees best results
- Cutterblock cover according to CE-standards ensure safety
- Infeed can be switched off when planing



The dynamically balanced 3-knife cutterblock ensures smooth, vibration-free planing, guarantees best results.



The solid planer fence with prism guide is tiltable up to 45°.

**Thousandfold
established classic**

A mortising unit is
optionally available



BERNARDO®
www.bernardo.at
HOBBY

Standard accessories:

- Cutter knives in HSS-quality
- Knife gauge
- Switch-plug combination
- Push handle

Technical data

ADM 260

Planer

Planing width	250 mm
Table length	1080 mm
Table height	990 mm
Shaft rotation speed	3750 rpm
Cutter knives	3 pcs.
Planer shaft diameter	75 mm
Planer fence	700 x 145 mm
Fence tiltable	90° to 45°
Max. cutting depth	5 mm

Thicknesser

Table length	600 mm
Working width	250 mm
Working thickness, min./max.	5 - 190 mm
Max. cutting depth	1,8 mm
Feed speed	8 m/min

Dust extraction outlet	100 mm
Motor power output S _I 100%	2,0 kW (2,7 HP)
Motor power input S _e 40%	2,8 kW (3,8 HP)
Voltage	230 V or 400 V
Machine dimension (L x W x H)	1100 x 750 x 1180 mm
Weight approx.	160 kg
Art. no.	08-1030 (230 V) 08-1035 (400 V)

Optional accessories:

Planer knives 250 x 30 x 3 mm, price per pc.	15-1000
Planer knife adjustment HML	08-1500
Mortising unit	08-1549
Mortising bit set 6 pcs. counterclockwise, 13 mm shaft	16-2003
Dust collector DC 230 E / 230 V with tube (2,5 m)	12-2043
Universal mobile base UF 300	56-1070
Lubricant 1 kg, paste	54-1000

Art. no. excl. VAT

The powerful and strong planer and thicknesser ADM 260 is thousandfold established at the amateur area. The centrally guided thickening table and torsion-free planing tables guarantees precise results.

ADM 260



The infeed function can be switched off when planing.



The optional mortising unit is optimal for slots, dowel pin and inclined bore, ...



When thickening, the folding tables allow precise and safe working even of short workpieces.

VOLTAGE

Alternatively in
230 V or 400 V



Cast iron thickening table with center column and clamping, for planing of workpieces up to 190 mm in height.

BERNARDO®
www.bernardo.at

You are welcome to request our current special offer catalogue at www.bernardo.at

Surface planer and thicknesser with spiral cutter head

ADM 260 S

- Reduction of noise level (approx. 50%) due to the standard spiral cutter head and up to 20 times the cutting edge life (results from four-way carbide inserts)
- Advantage of the carbide inserts: If damaged, individual knives can be exchanged or turned
- The carbide blades ensure tear-free planing results and optimal surfaces with any type of wood
- Folding planer tables allow quick and easy conversion from planing to thicknessing
- Integrated, tiltable dust hood, extraction outlet 100 mm
- Both planing tables feature fine adjustment and are designed with table lips to keep noise level down
- Thicknessing table with central column and support allow precise planing
- The solid planer fence with prism guide can be tilted from 90° to 45°
- Torsion-free, cast iron planing tables guarantees best results



The solid planer fence with prism guide is tiltable up to 45°.

**Spiral cutter head
as standard**

Standard accessories:

- Spiral cutter head with 24 pcs. TCT-blades
- Replacement TCT-blades (5 pcs.)
- Switch-plug combination
- Push handle

Technical data ADM 260 S

Planer

Planing width	250 mm
Table length	1080 mm
Table height	990 mm
Shaft rotation speed	3750 rpm
TCT-blades	24 pcs.
Planer shaft diameter	75 mm
Planer fence	700 x 145 mm
Fence tiltable	90° to 45°
Max. cutting depth	5 mm

Thicknesser

Table length	600 mm
Working width	250 mm
Working thickness, min./max.	5 - 190 mm
Max. cutting depth	1,8 mm
Feed speed	8 m/min

Dust extraction outlet	100 mm
Motor power output S _I 100%	2,0 kW (2,7 HP)
Motor power input S ₆ 40%	2,8 kW (3,8 HP)
Voltage	230 V or 400 V
Machine dimension (L x W x H)	1100 x 750 x 1180 mm
Weight approx.	160 kg
Art. no.	08-1036 (230 V) 08-1037 (400 V)

BERNARDO®
www.bernardo.at
HOBBY



Optionally available universal base allows for easy transport.

Optional accessories:

	Art. no.	excl. VAT
TCT-blades for spiral cutter (10 pcs.)	15-1076	
Spare screws of spiral cutter blade (10 pcs.)	15-1077	
Torque wrench 6 Nm	15-1080	
Mortising unit	08-1549	
Mortising bit set 6 pcs. counterclockwise, 13 mm shaft	16-2003	
Dust collector DC 230 E / 230 V with tube (2,5 m)	12-2043	
Universal mobile base MB 230	56-10700	
Lubricant 1 kg, paste	54-1000	

The machine for the professional home user with an optimal price-to-performance ratio. It meets demands such as stability, high performance and safety. Another advantage is the spiral cutter head for reduced noise level and optimal planing results.

ADM 260 S

NEW



The dynamically balanced spiral cutter head ensures smooth, vibration-free planing, guarantees best results.



Cast iron thickening table with center column and clamping, for planing of workpieces up to 190 mm in height.



When thickening, the folding tables allow precise and safe working even of short workpieces.

VOLTAGE

Alternatively in
230 V or 400 V



The infed function can be switched off when planing.

BERNARDO®
www.bernardo.at

Surface planers and thicknesser

AD 260

- Planing tables tilt to the back of the machine to keep space requirements to a minimum
- Precisely bedded, smooth running 3-knife cutterblock guarantees optimal results
- Integrated, tiltable dust hood, extraction outlet 100 mm
- Simultaneous tilting of planing tables to achieve maximum comfort
- Thicknessing table feed can be switched off when planing
- Hard-anodized aluminium planing fence, tiltable from 90° to 45°
- Thicknessing table with central column and support allow precise planing
- Torsion-free, cast iron planing tables guarantees best results
- Numerous safety devices: On/Off switch with undervoltage release, cutterblock cover in accordance with CE, limit switch to avoid accidental machine start,...



Solid thicknessing table with spindle guide and support for accurate planing of board, slats, planks etc.



The planing unit consists of a dynamically balanced 3-knife cutterblock, in- and outfeed roller and massive anti-kickback devices.



The table is designed with slots on both sides to minimize the noise level.

3-knife cutter-block as standard

Standard accessories:

- Cutter knives in HSS-quality
- Knife gauge
- Push handle



Technical data

AD 260

Planer

Planing width	250 mm
Table length	1090 mm
Table height	835 mm
Shaft rotation speed	4000 rpm
Cutter knives	3 pcs.
Planer shaft diameter	75 mm
Planer fence	715 x 130 mm
Fence tiltable	90° to 45°
Max. cutting depth	3 mm

Thicknesser

Table length	600 mm
Working width	250 mm
Working thickness, min./max.	5 - 185 mm
Max. cutting depth	2,5 mm
Feed speed	4,8 m/min

Dust extraction outlet	100 mm
Motor power output S ₁ 100%	2,0 kW (2,7 HP)
Motor power input S ₆ 40%	2,8 kW (3,8 HP)
Voltage	230 V or 400 V
Machine dimension (L x W x H)	1150 x 800 x 1000 mm
Weight approx.	173 kg
Art.no.	08-1051 (230 V) 08-1052 (400 V)

Optional accessories:

Cutter knife 250 x 30 x 3 mm, price per pc.	15-1000
Mortising unit	08-1549
Mortising bit set 6 pcs. counterclockwise, 13 mm shaft	16-2003
Dust collector DC 230 E / 230 V with tube (2,5 m)	12-2043
Dust collector DC 230 E / 400 V with tube (2,5 m)	12-2044
PU-tube diam. 100 mm (6 m)	12-1077
Automatic start-up ALV 10 / 1 M	12-1150
Lubricant 1 kg, paste	54-1000

Art. no. excl. VAT

Introducing the AD 260 model, positioned for the professional home user with an optimal price-to-performance ratio. It meets demands such as stability, high performance and safety. Another advantage is the short conversion time from planing to thicknessing due to the simultaneous tilting of the planing tables.

AD 260

Planing machines



Quick and easy adjustment of chip removal (up to 3 mm).

Mortising unit optionally available

The large surface of the aluminium planing fence allows absolute accuracy when processing large, heavy workpieces.



Best Price

Simultaneous tilting of planing

VOLTAGE

Alternatively in 230 V or 400 V



BERNARDO
SEMIPROFESSIONAL



Simultaneous folding of planing tables ensure maximum comfort.



The optional mortising unit is ideal for drilling dowel, long and oblique holes.

BERNARDO
www.bernardo.at

For our current offers please go to our Bernardo-Newsletter

Surface planer and thicknesser with spiral cutter head

AD 260 S

- Reduction of noise level (approx. 50%) due to the standard spiral cutter head and up to 20 times the cutting edge life (results from four-way carbide inserts)
- Advantage of the carbide inserts: If damaged, individual knives can be exchanged or turned
- Planing tables tilt to the back of the machine to keep space requirements to a minimum
- The carbide blades ensure tear-free planing results and optimal surfaces with any type of wood
- Simultaneous tilting of planing tables to achieve maximum comfort
- Thicknessing table feed can be switched off when planing
- Hard-anodized aluminium planing fence, tiltable from 90° to 45°
- Thicknessing table with central column and support allow precise planing
- Numerous safety devices: On/Off switch with undervoltage release, cutterblock cover in accordance with CE, limit switch to avoid accidental machine start,...



The planing unit consists of a dynamically balanced spiral cutter head, in- and outfeed roller and massive anti-kickback devices.



The table is designed with slots on both sides and a spiral cutter head to minimize the noise level.

VOLTAGE

Alternatively in
230 V or 400 V



Standard accessories:

- Spiral cutter head with 24 pcs. TCT-blades
- Replacement TCT-blades (5 pcs.)
- Push handle

Technical data

AD 260 S

Planer

Planing width	250 mm
Table length	1090 mm
Table height	835 mm
Shaft rotation speed	4000 rpm
TCT-blades	24 pcs.
Planer shaft diameter	75 mm
Planer fence	715 x 130 mm
Fence tiltable	90° to 45°
Max. cutting depth	3 mm

Thicknesser

Table length	600 mm
Working width	250 mm
Working thickness, min./max.	5 - 185 mm
Max. cutting depth	2,5 mm
Feed speed	4,8 m/min

Dust extraction outlet	100 mm
Motor power output S ₁ 100%	2,0 kW (2,7 HP)
Motor power input S ₆ 40%	2,8 kW (3,8 HP)
Voltage	230 V or 400 V
Machine dimension (L x W x H)	1150 x 800 x 1000 mm
Weight approx.	173 kg
Art.no.	08-1053 (230 V) 08-1054 (400 V)

Optional accessories:

TCT-blades for spiral cutter (10 pcs.)	15-1076
Spare screws of spiral cutter blade (10 pcs.)	15-1077
Torque wrench 6 Nm	15-1080
Mortising unit	08-1549
Mortising bit set 6 pcs. counterclockwise, 13 mm shaft	16-2003
Dust collector DC 230 E / 230 V with tube (2,5 m)	12-2043
Dust collector DC 230 E / 400 V with tube (2,5 m)	12-2044
PU-tube diam. 100 mm (6 m)	12-1077
Automatic start-up ALV 10 / 1 M	12-1150
Lubricant 1 kg, paste	54-1000

Art. no. excl. VAT

The machine for the professional home user with an optimal price-to-performance ratio. It meets demands such as stability, high performance and safety. Another advantage is the spiral cutter head for reduced noise level and optimal planing results.

AD 260 S



Quick and easy adjustment of chip removal (up to 3 mm).

Simultaneous tilting of planing

NEW



Solid thickening table with spindle guide and support for accurate planing of board, slats, planks etc.

Spiral cutter head as standard

The large surface of the aluminium planing fence allows absolute accuracy when processing large, heavy workpieces.



BERNARDO®
www.bernardo.at
SEMIPROFESSIONAL

Best Price



Simultaneous folding of planing tables ensure maximum comfort.

Mortising unit optionally available



The optional mortising unit is ideal for drilling dowel, long and oblique holes.

BERNARDO®
www.bernardo.at

Should you have any questions, please feel free to contact our service center +43 / 732 / 664015

Surface planer and thicknesser

PT 305 D

- Both planing tables feature fine adjustment and are designed with slots to keep noise levels down
- Thicknessing table is guided on four threads to ensure accurate planing of boards, planks, etc.
- Integrated dust extractor guarantees optimal price-performance ratio
- Quick and easy adjustment of chip removal
- Precise planing tables made of aluminium for best results
- Dust hood (Ø 100 mm) can be used for both planing and thicknessing
- Cutterblock comes with HSS-knives
- Corrugated infeed roller ensures safe and consistent workpiece infeed
- Solid planer fence with prism guide can be tilted from 90° to 45°
- Serially equipped with knife gauge to allow accurate adjustment of knives
- Infeed can be switched off when planing



Thicknessing table is guided on four threads. The height can be read on the scale.



Serially equipped with steering wheel and locking brake.



The precisely bedded cutterblock and corrugated infeed roller guarantees best planing results.

Integrated dust extraction

NEW

Optional accessories:

	Art. no.	excl. VAT
Set of planer knives in HSS-quality (2 pcs.)	15-1075	
Planer knife adjustment HML	08-1500	
Filter bag	97-79700	

Technical data

PT 305 D

Planer

Planing width	305 mm
Table length	1080 mm
Table height	920 mm
Shaft rotation speed	6700 rpm
Cutter knives	2 pcs.
Planer shaft diameter	62 mm
Planer fence	640 x 125 mm
Fence tiltable	90° to 45°
Max. cutting depth	3 mm

Thicknesser

Table length	500 mm
Working width	300 mm
Working thickness, min./max.	6 - 160 mm
Max. cutting depth	2 mm
Feed speed	8,5 m/min

Dust extraction outlet	100 mm / 75 mm
Motor power output S ₁ 100%	1,8 KW (2,4 HP)
Motor power input S ₆ 40%	2,5 KW (3,4 HP)
Voltage	230 V or 400 V
Machine dimension (L x W x H)	1140 x 820 x 1100 mm
Weight approx.	94 kg
Art. no.	08-1024 (230 V) 08-1025 (400 V)

Standard accessories:

- Cutter knives in HSS-quality
- Knife gauge
- Integrated dust extractor
- Waste bag
- 2x Push handle
- Carriage



BERNARDO
HOBBY

The PT 305 D planer and thicknesser offers a wide range of standard accessories, including an integrated dust extractor, waste bag and knife gauge, making this model unbeatable in price-performance ratio for the price conscious user.

PT 305 D



The planer fence with prism guide block can be tilted.



The machine is equipped with many safety devices to eliminate the risk of accidents.



The dust hood can be used for both planing and thicknessing.



Serially with carriage

VOLTAGE

Alternatively in 230 V or 400 V

Serially equipped with integrated dust extractor and filter bag.

BERNARDO®
www.bernardo.at

For technical requests you can reach us by e-mail at service@pwa.at

Surface planer and thicknesser

FS 310 P

- Planing tables fold to the backside of the machine to minimize space requirements
- Integrated tiltable dust hood, extraction outlet 100 mm
- Digital display on handwheel features 1/10 mm scaling for precise adjustment of thicknessing table
- Anodized aluminium planing fence, tilts from 90° to 45°
- Powerful motor for optimal planing results
- Quick and easy adjustment of chip removal
- Simultaneous folding of planing tables allows fast conversion from planing to thicknessing
- Ergonomically arranged control elements and switches
- Several safety devices: On/Off switch with undervoltage release, cutterblock cover in accordance with CE, limit switch to avoid accidental machine start
- Precisely bedded 3-knife cutterblock with HSS-knives



Solid thicknessing table with spindle guide and support for accurate planing of board, slats, planks etc.



Tables can be adjusted precisely - 1/10 mm - using the digital display.

VOLTAGE

Alternatively in
230 V or 400 V



Simultaneous folding of planing tables ensure maximum comfort.

Serial with
digital height adjustment

Mortising unit
optionally available

Technical data

FS 310 P

Planer

Planing width	310 mm
Table length	1400 mm
Table height	825 mm
Shaft rotation speed	4500 rpm
Cutter knives	3 pcs.
Planer shaft diameter	75 mm
Planer fence	1120 x 150 mm
Fence tiltable	90° to 45°
Max. cutting depth	3 mm

Thicknesser

Table length	600 mm
Working width	305 mm
Working thickness, min./max.	5 - 240 mm
Max. cutting depth	3 mm
Feed speed	5,4 m/min

Dust extraction outlet	100 mm
Motor power output S ₁ 100%	3,0 kW (4,0 HP)
Motor power input S ₆ 40%	4,2 kW (5,7 HP)
Voltage	230 V or 400 V
Machine dimension (L x W x H)	1400 x 900 x 980 mm
Weight approx.	205 kg
Art. no.	08-1045 (230 V)
	08-1046 (400 V)

Standard accessories:

- Cutter knives in HSS-quality
- Knife gauge
- Push handle
- Digital display for thicknessing table

Optional accessories:

Planer knives 310 x 30 x 3 mm, price per pc.	15-1005
Planer knives adjustment HML	08-1500
Mortising unit	08-1549
Mortising bit set 6 pcs. counterclockwise, 13 mm shaft	16-2003
Dust collector DC 300 / 400 V	12-2045
PU-tube diam. 100 mm (6 m)	12-1077
Automatic start-up ALV 10 / 1 M	12-1150
Automatic start-up system ALV 2 / M 230 - 230 V	12-1152
Universal mobile base UF 300	56-1070
Lubricant 1 kg, paste	54-1000

Art. no.

The FS 310 P planing and thickening machine was developed with an emphasis on safety, rigidity, compact construction and high user comfort, making this model meet the demands of experienced users.

FS 310 P

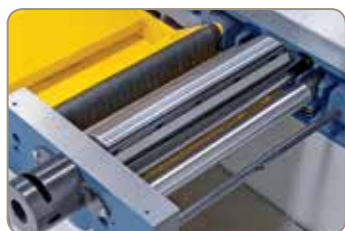


Quick and easy adjustment of chip removal (up to 3 mm).

The large surface of the aluminium planing fence allows absolute accuracy when processing large, heavy workpieces.



Simultaneous tilting of planing tables



The solid planing unit features a precisely bedded 3-knife cutterblock to guarantee best results.



NEW

BERNARDO®
www.bernardo.at
HOBBY



The long, reinforced, grey cast iron planing / thickening tables allow precise processing of oversize workpieces.



The planer fence can be set to required position via the precise prism guide.

BERNARDO®
www.bernardo.at

For your closest dealer, contact us at www.bernardo.at

Surface planer and thicknesser with spiral cutter head

FS 310 PS

- Reduction of noise level (approx. 50%) due to the standard spiral cutter head and up to 20 times the cutting edge life (results from four-way carbide inserts)
- Advantage of the carbide inserts: If damaged, individual knives can be exchanged or turned
- Planing tables fold to the backside of the machine to minimize space requirements
- The carbide blades ensure tear-free planing results and optimal surfaces with any type of wood
- Integrated tiltable dust hood, extraction outlet 100 mm
- Digital display on handwheel features 1/10 mm scaling for precise adjustment of thicknessing table
- Anodized aluminium planing fence, tilts from 90° to 45°
- Powerful motor for optimal planing results
- Quick and easy adjustment of chip removal
- Simultaneous folding of planing tables allows fast conversion from planing to thicknessing
- Several safety devices: On/Off switch with undervoltage release, cutterblock cover in accordance with CE, limit switch to avoid accidental machine start



Tables can be adjusted precisely - 1/10 mm - using the digital display.



Serial with
digital height adjustment

Simultaneous tilting
of planing tables

Technical data

FS 310 PS

Planer

Planing width	310 mm
Table length	1400 mm
Table height	825 mm
Shaft rotation speed	4500 rpm
TCT-blades	30 pcs.
Planer shaft diameter	75 mm
Planer fence	1120 x 150 mm
Fence tiltable	90° to 45°
Max. cutting depth	3 mm

Thicknesser

Table length	600 mm
Working width	305 mm
Working thickness, min./max.	5 - 240 mm
Max. cutting depth	3 mm
Feed speed	5,4 m/min

Dust extraction outlet	100 mm
Motor power output S ₁ 100%	3,0 kW (4,0 HP)
Motor power input S ₆ 40%	4,2 kW (5,7 HP)
Voltage	230 V or 400 V
Machine dimension (L x W x H)	1400 x 900 x 980 mm
Weight approx.	205 kg
Art.no.	08-1043 (230 V)
	08-1044 (400 V)

Standard accessories:

- Spiral cutter head with 24 pcs. TCT-blades
- Replacement TCT-blades (5 pcs.)
- Digital display for thicknessing table
- Push handle

Optional accessories:

TCT-blades for spiral cutter (10 pcs.)	15-1076
Spare screws of spiral cutter blade (10 pcs.)	15-1077
Torque wrench 6 Nm	15-1080
Mortising unit	08-1549
Mortising bit set 6 pcs. counterclockwise, 13 mm shaft	16-2003
Dust collector DC 300 / 400 V	12-2045
PU-tube diam. 100 mm (6 m)	12-1077
Automatic start-up ALV 10 / 1 M	12-1150
Automatic start-up system ALV 2 / M 230 - 230 V	12-1152
Universal mobile base MB 230	56-10700
Lubricant 1 kg, paste	54-1000

Optionally available universal base allows for easy transport.

The machine for the professional home user with an optimal price-to-performance ratio. It meets demands such as stability, high performance and safety. Another advantage is the spiral cutter head for reduced noise level and optimal planing results.

FS 310 PS



Quick and easy adjustment of chip removal (up to 3 mm).

The large surface of the aluminium planing fence allows absolute accuracy when processing large, heavy workpieces.



NEW



The solid planing unit features a precisely bedded spiral cutter head to guarantee best results.



Mortising unit optionally available

VOLTAGE

Alternatively in 230 V or 400 V

The long, reinforced, grey cast iron planing / thicknessing tables allow precise processing of oversize workpieces.



The planer fence can be set to required position via the precise prism guide.

BERNARDO®
www.bernardo.at

For the most up to date information please visit www.bernardo.at

Surface planer and thicknesser

PT 310

- Integrated tiltable dust hood, extraction outlet 100 mm
- Folding planing tables allows fast conversion from planer to thicknesser
- Switch-plug-combination with motor brake
- Solid planing fence with prism guide, tiltable from 90° - 45°
- Both planing tables feature fine adjustment and are designed with table lips to keep noise level down
- Maintenance-free 3-knife cutterblock with HSS-quality cutter knives
- Feed can be switched off when surface planing
- Cutterblock in accordance with CE allow for safe working conditions
- Thicknessing table guided by centre column and support for accurate planing
- Torsion-free, grey cast-iron planing tables for best planing results



The optional mortising unit is ideal for drilling dowel, long and oblique holes.



Grey cast-iron thicknessing table features centre column and support, for workpieces up to 180 mm in height.

Picture shows optionally available mortising unit.

Standard accessories:

- Cutter knives in HSS-quality
- Knife gauge
- Switch-plug-combination
- Push handle

Technical data	PT 310
Planer	
Planing width	310 mm
Table length	1300 mm
Table height	990 mm
Shaft rotation speed	4000 rpm
Cutter knives	3 pcs.
Planer shaft diameter	75 mm
Planer fence	1110 x 130 mm
Fence tiltable	90° to 45°
Max. cutting depth	5 mm
Thicknesser	
Table length	600 mm
Working width	305 mm
Working thickness, min./max.	5 - 180 mm
Max. cutting depth	2,5 mm
Feed speed	8 m/min
Dust extraction outlet	100 mm
Motor power output S ₁ 100%	2,2 kW (3,0 HP)
Motor power input S ₆ 40%	3,0 kW (4,0 HP)
Voltage	400 V
Machine dimension (L x W x H)	1300 x 900 x 1180 mm
Weight approx.	180 kg
Art. no.	08-1041

Optional accessories:

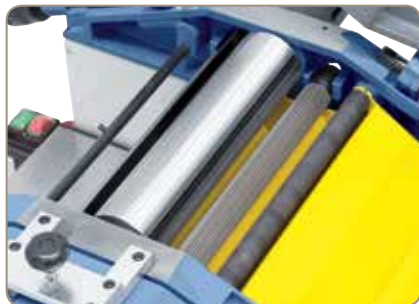
Planer knives 310 x 30 x 3 mm, price per pc.
 Planer knives adjustment HML
 Mortising unit
 Mortising bit set 6 pcs. counterclockwise, 13 mm shaft
 Dust collector DC 300 / 400 V
 Dust collector DC 400 / 400 V
 PU-tube diam. 100 mm (6 m)
 Universal mobile base UF 300
 Lubricant 1 kg, paste
 Automatic start-up ALV 10 / 1 M

Art. no.	excl. VAT
15-1005	
08-1500	
08-1549	
16-2003	
12-2045	
12-2060	
12-1077	
56-1070	
54-1000	
12-1150	

The PT 310 compact surface planer and thicknesser features a working thickness of up to 180 mm, making it the ideal model for planing of boards, planks and beams. The optionally available mortising unit makes the machine suitable for drilling and slotting.

PT 310

Planing machines



The planing unit consists of a dynamically balanced 3-knife cutterblock, in- and outfeed roller and massive anti-kickback devices.

The large support area of the long planing fence guarantees precision when working on oversize workpieces.



Feed can be switched off when surface planing.



BEST-PRICE!

BERNARDO
HOBBY



Folding planing tables allow for quick and easy conversion from planing to thicknessing.



Several protective devices ensure high user safety.

BERNARDO[®]
www.bernardo.at

You are welcome to request our current special offer catalogue at www.bernardo.at

Surface planer and thicknesser with spiral cutter head

PT 310 S

- Reduction of noise level (approx. 50%) due to the standard spiral cutter head and up to 20 times the cutting edge life (results from four-way carbide inserts)
- Advantage of the carbide inserts: If damaged, individual knives can be exchanged or turned
- Integrated tiltable dust hood, extraction outlet 100 mm
- The carbide blades ensure tear-free planing results and optimal surfaces with any type of wood
- Folding planing tables allows fast conversion from planer to thicknesser
- Solid planing fence with prism guide, tiltable from 90° - 45°
- Both planing tables feature fine adjustment and are designed with table lips to keep noise level down
- Cutterblock in accordance with CE allow for safe working conditions
- Thicknessing table guided by centre column and support for accurate planing
- Torsion-free, grey cast-iron planing tables for best planing results



The optional mortising unit is ideal for drilling dowel, long and oblique holes.

NEW

BERNARDO®
www.bernardo.at
HOBBY

Picture shows optionally available mortising unit.

Standard accessories:

- Spiral cutter head with 30 pcs. TCT-blades
- Replacement TCT-blades (5 pcs.)
- Switch-plug-combination
- Push handle

Technical data

PT 310 S

Planer

Planing width	310 mm
Table length	1300 mm
Table height	990 mm
Shaft rotation speed	4000 rpm
TCT-blades	30 pcs.
Planer shaft diameter	75 mm
Planer fence	1110 x 130 mm
Fence tiltable	90° to 45°
Max. cutting depth	5 mm

Thicknesser

Table length	600 mm
Working width	305 mm
Working thickness, min./max.	5 - 180 mm
Max. cutting depth	2,5 mm
Feed speed	8 m/min

Dust extraction outlet	100 mm
Motor power output S ₁ 100%	2,2 kW (3,0 HP)
Motor power input S ₆ 40%	3,0 kW (4,0 HP)
Voltage	400 V
Machine dimension (L x W x H)	1300 x 900 x 1180 mm
Weight approx.	180 kg
Art. no.	08-1039

Optional accessories:

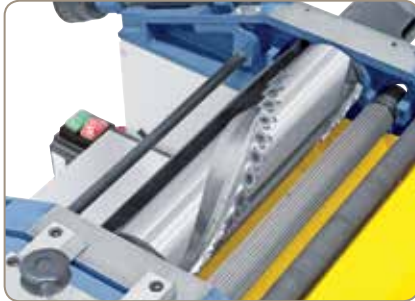
TCT-blades for spiral cutter (10 pcs.)	15-1076
Spare screws of spiral cutter blade (10 pcs.)	15-1077
Torque wrench 6 Nm	15-1080
Mortising unit	08-1549
Mortising bit set 6 pcs. counterclockwise, 13 mm shaft	16-2003
Dust collector DC 300 / 400 V	12-2045
Dust collector DC 400 / 400 V	12-2060
PU-tube diam. 100 mm (6 m)	12-1077
Universal mobile base UF 300	56-1070
Lubricant 1 kg, paste	54-1000
Automatic start-up ALV 10 / 1 M	12-1150

BEST-PRICE!

Art. no. excl. VAT

The PT 310 S compact surface planer and thicknesser features a working thickness of up to 180 mm, making it the ideal model for planing of boards, planks and beams. The optionally available mortising unit makes the machine suitable for drilling and slotting. Another advantage is the spiral cutter head for reduced noise level and optimal planing results.

PT 310 S



The large support area of the long planing fence guarantees precision when working on oversize workpieces.

Spiral cutter head as standard



The planing unit consists of a dynamically balanced spiral cutter head, in- and outfeed roller and massive anti-kickback devices.



Grey cast-iron thickening table features centre column and support, for workpieces up to 180 mm in height.



Folding planing tables allow for quick and easy conversion from planing to thicknessing.



Feed can be switched off when surface planing.

BERNARDO®
www.bernardo.at

Should you have any questions, please feel free to contact our service center +43 / 732 / 664015

Surface planers and thicknessers

ADM 300 ADM 300 V

- Folding planing tables for quick conversion to thicknessing
- Integrated tiltable dust hood, extraction outlet 100 mm
- Both planing tables feature fine adjustment and noise absorbing table lips
- Maintenance-free 4-knife cutterblock with 18% quality HSS- knives
- Spiral toothed infeed roller for safe and consistent workpiece infeed
- Thicknessing table with central column and support for a high level of accuracy
- Planing fence positioned to side of machine, allowing machine to be flush with wall
- Model ADM 300 V comes with stepless feed speed adjustment (1 - 10 m/min)
- Serially equipped with knife gauge to ensure precise adjustment of cutter knives
- Powerful, high performance motor



The mortising unit is ideal for drilling slots, dowels and inclined bores (optional).



The precisely bedded 4-knife cutterblock and the spiral toothed infeed roller ensure best results.



The table lips in combination with the perforated chip plate keep the noise level to a minimum.

**Stepless
speed adjustment**

ADM 300 V

BERNARDO®
HOBBY

Standard accessories:

- Cutter knives in HSS-quality
- Knife gauge
- Integrated carriage
- Stepless infeed (ADM 300 V)
- Digital display for thicknessing table (ADM 300 V)
- Push handle

Technical data	ADM 300	ADM 300 V
Planer		
Planing width	305 mm	305 mm
Table length	1510 mm	1510 mm
Table height	915 mm	915 mm
Shaft rotation speed	5500 rpm	5500 rpm
Cutter knives	4 pcs.	4 pcs.
Planer shaft diameter	78 mm	78 mm
Planer fence	1105 x 155 mm	1105 x 155 mm
Fence tiltable	90° to 45°	90° to 45°
Max. cutting depth	3 mm	3 mm
Thicknesser		
Table length	585 mm	585 mm
Working width	300 mm	300 mm
Working thickness, min./max.	3 - 220 mm	3 - 220 mm
Max. cutting depth	3 mm	3 mm
Feed speed	6,6 m/min	1 - 10 m/min, stepless
Dust extraction outlet	100 mm	100 mm
Motor power output S ₁ 100%	3,0 kW (4,0 HP)	3,0 kW (4,0 HP)
Motor power input S ₆ 40%	4,2 kW (5,7 HP)	4,2 kW (5,7 HP)
Voltage	400 V	400 V
Machine dimension (L x W x H)	1700 x 790 x 1080 mm	1700 x 790 x 1080 mm
Weight approx.	280 kg	280 kg
Art. no.	08-1085	08-1087A



Optional accessories:

	Art. no.	excl. VAT
Cutter knife 305 x 25 x 3 mm, price per pc.	15-1004	
Mortising unit	08-1088	
Mortising bit set 6 pcs. counterclockwise, 13 mm shaft	16-2003	
Dust collector DC 300 / 400 V	12-2045	
PU-tube diam. 100 mm (6 m)	12-1077	
Automatic start-up ALV 10 / 1 M	12-1150	
Lubricant 1 kg, paste	54-1000	

These machines offer the ideal price-performance ratio for the well-advanced amateur. These machines meet all the users' requirements with features like a high level of stability and quick conversion while providing large power resources. Additionally, the ADM 300 V features a stepless feed speed, ensuring ideal adjustment to the workpiece.

ADM 300 ADM 300 V

Planing machines



The planer fence is positioned to the side of the machine to keep the required space to a minimum.

The long surface of the aluminum planer fence allows precise guiding of heavy and large workpieces.



Serially with
carriage



The stepless speed adjustment is ideal for different workpieces (ADM 300 V).

Serial with
digital height adjustment



Ergonomically arranged control elements to set chip removal.

BERNARDO®
www.bernardo.at

For technical requests you can reach us by e-mail at service@pwa.at

Surface planers and thicknessers

AD 310

- Planing tables tilt to the back of the machine to keep space requirements to a minimum
- Precisely bedded, smooth running 4-knife cutterblock guarantees optimal results
- Integrated, tiltable dust hood, extraction outlet 100 mm
- Simultaneous tilting of planing tables to achieve maximum comfort
- Thicknessing table feed can be switched off when planing
- Hard-anodized aluminium planing fence, tiltable from 90° to 45°
- Thicknessing table with central column and support allow precise planing
- Torsion-free, cast iron planing tables guarantees best results
- Numerous safety devices: On/Off switch with undervoltage release, cutterblock cover in accordance with CE, limit switch to avoid accidental machine start,...



Solid thicknessing table with spindle guide and support for accurate planing of board, slats, planks etc.



The planing unit consists of a dynamically balanced 4-knife cutterblock, in- and outfeed roller and massive anti-kickback devices.

4-knife cutter-block as standard



The table is designed with slots on both sides to minimize the noise level.

Standard accessories:

- Cutter knives in HSS-quality
- Knife gauge
- Push handle



Technical data

AD 310

Planer

Planing width	310 mm
Table length	1610 mm
Table height	910 mm
Shaft rotation speed	4300 rpm
Cutter knives	4 pcs.
Planer shaft diameter	95 mm
Planer fence	1110 x 150 mm
Fence tiltable	90° to 45°
Max. cutting depth	3 mm

Thicknesser

Table length	750 mm
Working width	310 mm
Working thickness, min./max.	5 - 225 mm
Max. cutting depth	5 mm
Feed speed	6 m/min

Dust extraction outlet	100 mm
Motor power output S ₁ 100%	3,0 kW (4,0 HP)
Motor power input S ₆ 40%	3,0 kW (4,0 HP)
Voltage	400 V
Machine dimension (L x W x H)	1610 x 900 x 1150 mm
Weight approx.	295 kg
Art.no.	08-1064

Optional accessories:

Cutter knife 310 x 30 x 3 mm, price per pc.	15-1005	excl. VAT
Mortising unit	08-1068	
Mortising bit set 6 pcs. counterclockwise, 13 mm shaft	16-2003	
Dust collector DC 300 / 400 V	12-2045	
PU-tube diam. 100 mm (6 m)	12-1077	
Automatic start-up ALV 10 / 1 M	12-1150	
Lubricant 1 kg, paste	54-1000	

Introducing the AD 310 model, positioned for the professional home user with an optimal price-to-performance ratio. It meets demands such as stability, high performance and safety. Another advantage is the short conversion time from planing to thicknessing due to the simultaneous tilting of the planing tables.

AD 310

Planing machines



Quick and easy adjustment of chip removal (up to 3 mm).

**Mortising unit
optionally available**

The large surface of the aluminium planing fence allows absolute accuracy when processing large, heavy workpieces.



**Simultaneous
tilting of planing**

**Best
Price**

BERNARDO®
www.bernardo.at
SEMIPROFESSIONAL



Simultaneous folding of planing tables ensure maximum comfort.



The optional mortising unit is ideal for drilling dowel, long and oblique holes.

BERNARDO®
www.bernardo.at

For your closest dealer, contact us at www.bernardo.at

Surface planer and thicknesser with spiral cutter head

AD 310 S

- Reduction of noise level (approx. 50%) due to the standard spiral cutter head and up to 20 times the cutting edge life (results from four-way carbide inserts)
- Advantage of the carbide inserts: If damaged, individual knives can be exchanged or turned
- Planing tables tilt to the back of the machine to keep space requirements to a minimum
- Integrated, tiltable dust hood, extraction outlet 100 mm
- The carbide blades ensure tear-free planing results and optimal surfaces with any type of wood
- Simultaneous tilting of planing tables to achieve maximum comfort
- Hard-anodized aluminium planing fence, tiltable from 90° to 45°
- Thicknessing table with central column and support allow precise planing
- Torsion-free, cast iron planing tables guarantees best results
- Numerous safety devices: On/Off switch with undervoltage release, cutterblock cover in accordance with CE, limit switch to avoid accidental machine start,...



The planing unit consists of a dynamically balanced spiral cutter head, in- and outfeed roller and massive anti-kickback devices.



Solid thicknessing table with spindle guide and support for accurate planing of board, slats, planks etc.

BERNARDO
SEMIPROFESSIONAL

Spiral cutter head as standard



Standard accessories:

- Spiral cutter head with 56 pcs. TCT-blades
- Replacement TCT-blades (5 pcs.)
- Push handle

Technical data	AD 310 S
Planer	
Planing width	310 mm
Table length	1610 mm
Table height	910 mm
Shaft rotation speed	4300 rpm
TCT-blades	52 pcs.
Planer shaft diameter	95 mm
Planer fence	1110 x 150 mm
Fence tiltable	90° to 45°
Max. cutting depth	3 mm
Thicknesser	
Table length	750 mm
Working width	310 mm
Working thickness, min./max.	5 - 225 mm
Max. cutting depth	5 mm
Feed speed	6 m/min
Dust extraction outlet	100 mm
Motor power output S ₁ 100%	3,0 kW (4,0 HP)
Motor power input S ₆ 40%	4,2 kW (5,7 HP)
Voltage	400 V
Machine dimension (L x W x H)	1610 x 900 x 1150 mm
Weight approx.	295 kg
Art.no.	08-1066

Optional accessories:

TCT-blades for spiral cutter (10 pcs.)
Spare screws of spiral cutter blade (10 pcs.)
Torque wrench 6 Nm
Mortising unit
Mortising bit set 6 pcs. counterclockwise, 13 mm shaft
Dust collector DC 300 / 400 V
PU-tube diam. 100 mm (6 m)
Automatic start-up ALV 10 / 1 M
Lubricant 1 kg, paste

Art. no.	excl. VAT
15-1078	
15-1079	
15-1080	
08-1068	
16-2003	
12-2045	
12-1077	
12-1150	
54-1000	

Introducing the AD 310 S model, positioned for the professional home user with an optimal price-to-performance ratio. It meets demands such as stability, high performance and safety. Another advantage is the short conversion time from planing to thicknessing due to the simultaneous tilting of the planing tables and the spiral cutter head for reduced noise level and optimal planing results.

AD 310 S

Planing machines



Quick and easy adjustment of chip removal (up to 3 mm).

Mortising unit optionally available

The large surface of the aluminium planing fence allows absolute accuracy when processing large, heavy workpieces.



Simultaneous tilting of planing

Best Price

NEW



Simultaneous folding of planing tables ensure maximum comfort.



The optional mortising unit is ideal for drilling dowel, long and oblique holes.

BERNARDO®
www.bernardo.at

For the most up to date information please visit www.bernardo.at

Surface planer and thicknesser

FS 410 N

- Digital display on handwheel features 1/10 mm scaling for precise adjustment of thicknessing table
- Planing tables tilt to the back of the machine to keep space requirements to a minimum
- Integrated tiltable dust hood, extraction outlet 120 mm
- Simultaneous tilting of planing tables to achieve maximum comfort
- Thicknessing table feed can be switched off when planing
- Grey cast-iron thicknessing table features central column and support for workpieces up to 230 mm in height
- Precisely bedded, smooth running 3-knife cutterblock guarantees optimal results
- Hard-anodized aluminium planing fence, tiltable from 90° to 45°
- Quick and easy setting of chip removal
- Numerous safety devices: On/Off switch with undervoltage release, cutterblock cover in accordance with CE, limit switch to avoid accidental machine start



Solid thicknessing table with spindle guide and support for accurate planing of boards, planks and slats.



Integrated, tiltable dust hood - extraction outlet 120 mm.



Easy setting and convenient readout of chip removal when planing.

Digital readout for thicknessing table adjustment

Standard accessories:

- Cutter knives in HSS-quality
- Knife gauge
- Digital display for thicknessing table
- Push handle

Simultaneous tilting of planing tables



Simultaneous tilting of planing tables allows for extremely fast conversion from planing to thicknessing.

Technical data

FS 410 N

Planer

Planing width	405 mm
Table length	1640 mm
Table height	850 mm
Shaft rotation speed	5500 rpm
Cutter knives	3 pcs.
Planer shaft diameter	70 mm
Planer fence	1100 x 150 mm
Fence tiltable	90° to 45°
Max. cutting depth	3,5 mm

Thicknesser

Table length	600 mm
Working width	405 mm
Working thickness, min./max.	5 - 230 mm
Max. cutting depth	4,0 mm
Feed speed	7 m/min

Dust extraction outlet	120 mm
Motor power output S ₁ 100%	4,0 kW (5,5 HP)
Motor power input S ₆ 40%	5,5 kW (7,5 HP)
Voltage	400 V
Machine dimension (L x W x H)	1650 x 1000 x 1000 mm
Weight approx.	255 kg
Art.no.	08-1059

Optional accessories:

Cutter knives 410 x 25 x 3 mm, price per pc.	15-1017	Art. no.	excl. VAT
Planer knives adjustment HML	08-1500		
Automatic start-up ALV 10 / 1 M	12-1150		
PU-tube diam. 100 mm (6 m)	12-1077		
PU-tube diam. 120 mm (6 m)	12-1078		
Reduction 120 / 100 mm	12-2032		
Dust collector DC 300 / 400 V	12-2045		
Dust collector DC 400 / 230 V	12-2055		

Introducing the FS 410 N model, positioned for the professional home user with an optimal price-to-performance ratio. It meets demands such as stability, high performance and safety. Another advantage is the short conversion time from planing to thicknessing due to the simultaneous tilting of the planing tables.

FS 410 N

Planing machines



Corrugated infeed roller and rubber-coated outfeed roller allows for optimal workpiece feed.

Solid planing fence with wide guide, tiltable from 90° to 45°.



**Best
Price**

BERNARDO®
www.bernardo.at
HOBBY

Planing tables tilt to the back of machine to keep space requirements to a minimum.



Precise adjustment of thicknessing height – 1/10 mm accuracy with digital display.

BERNARDO®
www.bernardo.at

You are welcome to request our current special offer catalogue at www.bernardo.at

Surface planer and thicknesser

PT 410

- Solid planer fence with prism guide, tiltable from 90° to 45°
- Maintenance-free 4-knife cutterblock features HSS-quality cutter knives
- Tiltable planer tables for quick conversion to thicknessing
- Both planer tables feature fine adjustment and table slots to reduce noise levels
- Integrated tiltable dust hood – extraction outlet 100 mm
- Feed can be switched off when planing
- Switch-plug-combination with motor brake
- Torsion-free, grey cast-iron planer tables ensure best results
- Cutterblock guard in accordance with CE-standards guarantees high level of safety
- Thicknessing table runs on central column and is well supported for high accuracy



The precisely bedded 4-knife cutterblock and the straight toothed of the infeed roller ensure top work results.

4-knife cutterblock as standard



The grey cast-iron planer tables with polished surface guarantees an optimal sliding capacity of the workpiece.



The tiltable planer tables allow optimal, safe working conditions even when thicknessing short workpieces.

Technical data

PT 410

Planer

Planing width	410 mm
Table length	1600 mm
Table height	920 mm
Shaft rotation speed	4000 rpm
Cutter knives	4 pcs.
Planer shaft diameter	95 mm
Planer fence	1120 x 130 mm
Fence tiltable	90° to 45°
Max. cutting depth	5 mm

Thicknesser

Table length	750 mm
Working width	410 mm
Working thickness, min./max.	4 - 220 mm
Max. cutting depth	2,5 mm
Feed speed	8 m/min

Dust extraction outlet	100 mm
Motor power output S ₁ 100%	3,0 kW (4,0 HP)
Motor power input S ₆ 40%	4,2 kW (5,7 HP)
Voltage	400 V
Machine dimension (L x W x H)	1610 x 1050 1100 mm
Weight approx.	340 kg
Art. no.	08-1061

Standard accessories:

- Cutter knives in HSS-quality
- Knife gauge
- Switch-plug-combination
- Push handle

Optional accessories:

Planer knives 410 x 30 x 3 mm, price per pc.	15-1016	Art. no.	excl. VAT
Planer knife adjustment HML	08-1500		
Mortising unit	08-1550		
Mortising bit set 6 pcs., counterclockwise, 13 mm shaft	16-2003		
Dust collector DC 300 / 400 V	12-2045		
Dust collector DC 400 / 400 V	12-2060		
PU-tube diam. 100 mm (6 m)	12-1077		
Automatic start-up ALV 10 / 1 M	12-1150		
Automatic start-up ALV 2 / M 230 - 230 V	12-1152		
Lubricant 1 kg, paste	54-1000		

The PT 410 is a compact planer and thicknesser with a thickening height of 220 mm – ideal for precise planing of boards, planks and beams. To widen the application range the optionally available mortising unit can be added to allow slotting and drilling.

PT 410

Planing machines



The planer fence can be set to required position via the precise prism guide.

Both planer tables are equipped with table lips to reduce noise.



BERNARDO®
HOBBY

BEST-PRICE!



PT 410 with optional mortising unit.



The mortising unit is ideal for drilling deep holes, dowels and oblique holes etc.

BERNARDO®
www.bernardo.at

Current second hand machines, remnants or sample machines are available at www.bernardo.at

Surface planer and thicknesser with spiral cutter head

PT 410 S

- Reduction of noise level (approx. 50%) due to the standard spiral cutter head and up to 20 times the cutting edge life (results from four-way carbide inserts)
- Advantage of the carbide inserts: If damaged, individual knives can be exchanged or turned
- Solid planer fence with prism guide, tiltable from 90° to 45°
- The carbide blades ensure tear-free planing results and optimal surfaces with any type of wood
- Tiltable planer tables for quick conversion to thicknessing
- Both planer tables feature fine adjustment and table slots to reduce noise levels
- Integrated tiltable dust hood – extraction outlet 100 mm
- Torsion-free, grey cast-iron planer tables ensure best results
- Cutterblock guard in accordance with CE-standards guarantees high level of safety
- Thicknessing table runs on central column and is well supported for high accuracy



The precisely bedded spiral cutter head and the straight toothed of the infeed roller ensure top work results.

Standard accessories:

- Spiral cutter head with 72 pcs. TCT-blades
- Replacement TCT-blades (5 pcs.)
- Switch-plug-combination
- Push handle

Technical data

PT 410 S

Planer

Planing width	410 mm
Table length	1600 mm
Table height	920 mm
Shaft rotation speed	4000 rpm
TCT-blades	72 pcs.
Planer shaft diameter	95 mm
Planer fence	1120 x 130 mm
Fence tiltable	90° to 45°
Max. cutting depth	5 mm

Thicknesser

Table length	750 mm
Working width	410 mm
Working thickness, min./max.	4 - 220 mm
Max. cutting depth	2,5 mm
Feed speed	8 m/min

Dust extraction outlet	100 mm
Motor power output S ₁ 100%	3,0 kW (4,0 HP)
Motor power input S ₆ 40%	4,2 kW (5,7 HP)
Voltage	400 V
Machine dimension (L x W x H)	1610 x 1050 1100 mm
Weight approx.	340 kg
Art. no.	08-1063



The tiltable planer tables allow optimal, safe working conditions even when thicknessing short workpieces.

NEW

Spiral cutter head as standard

Optional accessories:

TCT-blades for spiral cutter (10 pcs.)	Art. no.	excl. VAT
Spare screws of spiral cutter blade (10 pcs.)	15-1078	
Torque wrench 6 Nm	15-1079	
Mortising unit	15-1080	
Mortising bit set 6 pcs., counterclockwise, 13 mm shaft	08-1550	
Dust collector DC 300 / 400 V	16-2003	
Dust collector DC 400 / 400 V	12-2045	
PU-tube diam. 100 mm (6 m)	12-2060	
Automatic start-up ALV 10 / 1 M	12-1077	
Automatic start-up ALV 2 / M 230 - 230 V	12-1150	
Lubricant 1 kg, paste	12-1152	
	54-1000	

The PT 410 S is a compact planer and thicknesser with a thickening height of 220 mm – ideal for precise planing of boards, planks and beams. To widen the application range the optionally available mortising unit can be added to allow slotting and drilling. Another advantage is the spiral cutter head for reduced noise level and optimal planing results.

PT 410 S



The grey cast-iron planer tables with polished surface guarantees an optimal sliding capacity of the workpiece.



The planer fence can be set to required position via the precise prism guide.



BERNARDO®
HOBBY

BEST-PRICE!



PT 410 with optional mortising unit.



The mortising unit is ideal for drilling deep holes, dowels and oblique holes etc.

BERNARDO®
www.bernardo.at

For our current offers please go to our Bernardo-Newsletter

Surface planer and thicknesser

AD 410

- Planing tables tilt to the back of the machine to keep space requirements to a minimum
- Precisely bedded, smooth running 4-knife cutterblock guarantees optimal results
- Integrated, tiltable dust hood, extraction outlet 100 mm
- Simultaneous tilting of planing tables to achieve maximum comfort
- Thicknessing table feed can be switched off when planing
- Hard-anodized aluminium planing fence, tiltable from 90° to 45°
- Thicknessing table with central column and support allow precise planing
- Torsion-free, cast iron planing tables guarantees best results
- Numerous safety devices: On/Off switch with undervoltage release, cutterblock cover in accordance with CE, limit switch to avoid accidental machine start,...

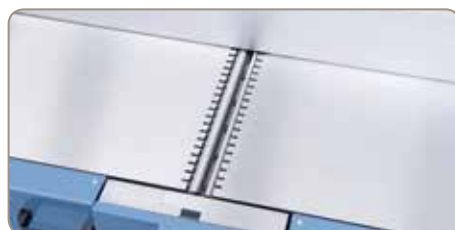


Solid thicknessing table with spindle guide and support for accurate planing of board, slats, planks etc.



The planing unit consists of a dynamically balanced 4-knife cutterblock, in- and outfeed roller and massive anti-kickback devices.

4-knife cutter-block as standard



The table is designed with slots on both sides to minimize the noise level.

Standard accessories:

- Cutter knives in HSS-quality
- Knife gauge
- Push handle

Technical data	AD 410
Planer	
Planing width	410 mm
Table length	1685 mm
Table height	920 mm
Shaft rotation speed	4300 rpm
Cutter knives	4 pcs.
Planer shaft diameter	95 mm
Planer fence	1110 x 150 mm
Fence tiltable	90° to 45°
Max. cutting depth	3 mm
Thicknesser	
Table length	750 mm
Working width	410 mm
Working thickness, min./max.	4 - 220 mm
Max. cutting depth	5 mm
Feed speed	6 m/min
Dust extraction outlet	100 mm
Motor power output S ₁ 100%	3,0 kW (4,0 HP)
Motor power input S ₆ 40%	4,2 kW (5,7 HP)
Voltage	400 V
Machine dimension (L x W x H)	1685 x 1045 x 1100 mm
Weight approx.	340 kg
Art.no.	08-1067



Simultaneous folding of planing tables ensure maximum comfort.

Optional accessories:

Cutter knife 410 x 30 x 3 mm, price per pc.
 Mortising unit
 Mortising bit set 6 pcs. counterclockwise, 13 mm shaft
 Dust collector DC 300 / 400 V
 PU-tube diam. 100 mm (6 m)
 Automatic start-up ALV 10 / 1 M
 Lubricant 1 kg, paste

Art. no.	excl. VAT
15-1016	
08-1068	
16-2003	
12-2045	
12-1077	
12-1150	
54-1000	

The AD 410 combined planer and thicknesser machine feature optimal price to benefit and is best suitable for professional users. This machine meet all the users requirements with features like a high level of stability and quick conversion while providing large power resources. The dual lift of both planer tables reduce conversion time to thicknessing significantly.

AD 410



Quick and easy adjustment of chip removal (up to 3 mm).

Mortising unit optionally available



The large surface of the aluminium planing fence allows absolute accuracy when processing large, heavy workpieces.



Simultaneous tilting of planing

Best Price

BERNARDO®
www.bernardo.at
SEMI PROFESSIONAL



Integrated, tiltable dust hood, extraction outlet 100 mm



The infeed function can be switched off when planing.



The mortising unit is ideal for drilling deep holes, dowels and oblique holes etc.

BERNARDO®
www.bernardo.at

Should you have any questions, please feel free to contact our service center +43 / 732 / 664015

Surface planer and thicknesser with spiral cutter head

AD 410 S

- Reduction of noise level (approx. 50%) due to the standard spiral cutter head and up to 20 times the cutting edge life (results from four-way carbide inserts)
- Advantage of the carbide inserts: If damaged, individual knives can be exchanged or turned
- Planing tables tilt to the back of the machine to keep space requirements to a minimum
- The carbide blades ensure tear-free planing results and optimal surfaces with any type of wood
- Simultaneous tilting of planing tables to achieve maximum comfort
- Thicknessing table feed can be switched off when planing
- Hard-anodized aluminium planing fence, tiltable from 90° to 45°
- Thicknessing table with central column and support allow precise planing
- Torsion-free, cast iron planing tables guarantees best results
- Numerous safety devices: On/Off switch with undervoltage release, cutterblock cover in accordance with CE, limit switch to avoid accidental machine start,...



The planing unit consists of a dynamically balanced spiral cutter head, in- and outfeed roller and massive anti-kickback devices.



Solid thicknessing table with spindle guide and support for accurate planing of board, slats, planks etc.

NEW

Spiral cutter head as standard



Simultaneous folding of planing tables ensure maximum comfort.

Standard accessories:

- Spiral cutter head with 72 pcs. TCT-blades
- Replacement TCT-blades (5 pcs.)
- Push handle

Technical data	AD 410 S
Planer	
Planing width	410 mm
Table length	1685 mm
Table height	920 mm
Shaft rotation speed	4300 rpm
TCT-blades	72 pcs.
Planer shaft diameter	95 mm
Planer fence	1110 x 150 mm
Fence tiltable	90° to 45°
Max. cutting depth	3 mm
Thicknesser	
Table length	750 mm
Working width	410 mm
Working thickness, min./max.	4 - 220 mm
Max. cutting depth	5 mm
Feed speed	6 m/min
Dust extraction outlet	100 mm
Motor power output S ₁ 100%	3,0 kW (4,0 HP)
Motor power input S ₆ 40%	4,2 kW (5,7 HP)
Voltage	400 V
Machine dimension (L x W x H)	1685 x 1045 x 1100 mm
Weight approx.	340 kg
Art.no.	08-1069

Optional accessories:

- TCT-blades for spiral cutter (10 pcs.)
- Spare screws of spiral cutter blade (10 pcs.)
- Torque wrench 6 Nm
- Mortising unit
- Mortising bit set 6 pcs. counterclockwise, 13 mm shaft
- Dust collector DC 300 / 400 V
- PU-tube diam. 100 mm (6 m)
- Automatic start-up ALV 10 / 1 M
- Lubricant 1 kg, paste

Art. no.	excl. VAT
15-1078	
15-1079	
15-1080	
08-1068	
16-2003	
12-2045	
12-1077	
12-1150	
54-1000	

The AD 410 S combined planer and thicknesser machine feature optimal price to benefit and is best suitable for professional users. This machine meet all the users requirements with features like a high level of stability and quick conversion while providing large power resources. The dual lift of both planer tables reduce conversion time to thicknessing significantly. Another advantage is the spiral cutter head for reduced noise level and optimal planing results.

AD 410 S



**Mortising unit
optionally available**

Quick and easy adjustment
of chip removal (up to 3 mm).

The planer fence can be set to required
position via the precise prism guide.



**Simultaneous
tilting of planing**

**Best
Price**

BERNARDO®
www.bernardo.at
SEMIPROFESSIONAL



Integrated, tiltable dust hood,
extraction outlet 100 mm



The infeed function can be
switched off when planing.



The mortising unit is ideal for drilling deep
holes, dowels and oblique holes etc.

BERNARDO®
www.bernardo.at

For technical requests you can reach us by e-mail at service@pwa.at

Surface planing machine SP 150 PN

The planing machine SP 150 PN is designed for accurate planing, jointing and chamfering of boards, planks etc. at entry level. The heavy cast iron frame and precise construction meet the requirements of ambitious amateurs and craftsmen.

- Cutterblock features HSS-planing knives
- Ideal for planing of boards, planks etc.
- Most accurate grey cast iron planing tables guarantees excellent results
- Extremely long planing tables with ground surface assure perfectly smooth results
- On/Off button with undervoltage release
- Solid cast iron planing fence, tiltable from 90° to 45°
- Handwheel allows easy adjustment of chip removal
- Solid construction eliminates vibrations



The solidly built, up to 45° tiltable planer fence can easily be adjusted.



The planing fence features a solid tilting device including adjustable end stops

VOLTAGE

Alternatively in
230 V or 400 V

NEW

Standard accessories:

- Cutter knives in HSS-Quality
- Knife gauge
- 2 x push handle

Technical data	SP 150 PN
Planing width	150 mm
Table length	1230 mm
Table height	820 mm
Infeed table length	590 mm
Outfeed table length	585 mm
Planer fence	740 x 100 mm
Cutter knives	3 pcs.
Planer shaft diameter	60 mm
Shaft rotation speed	4500 rpm
Max. cutting depth	8 mm
Dust extraction outlet	100 mm
Motor power output S ₁ 100%	1,1 kW (1,5 HP)
Motor power input S ₆ 40%	1,5 kW (2,0 HP)
Voltage	230 V or 400 V
Machine dimension (L x W x H)	1230 x 530 x 1180 mm
Weight approx.	115 kg
Art. no.	08-10130 (230 V) 08-10131 (400 V)



Serially equipped with
On/Off switch according to IP 54
including undervoltage release.

BERNARDO®
SEMIPROFESSIONAL



Optional accessories:

Cutter knives 153 x 17 x 3 mm, price per pc.
PU-tube diam. 100 mm (6 m)
Dust collector DC 230 E / 230 V with tube (2,5 m)
Universal mobile base UF 300

Art. no. excl. VAT

15-0989
12-1077
12-2043
56-1070

Surface planing machine with spiral cutter head

SP 150 PS

Planing machines

- Reduction of noise level (approx. 50%) due to the standard spiral cutter head and up to 20 times the cutting edge life (results from four-way carbide inserts)
- Advantage of the carbide inserts: If damaged, individual knives can be exchanged or turned
- Ideal for planing of boards, planks etc.
- The carbide blades ensure tear-free planing results and optimal surfaces with any type of wood
- Most accurate grey cast iron planing tables guarantees excellent results
- Extremely long planing tables with ground surface assure perfectly smooth results
- On/Off button with undervoltage release
- Solid cast iron planing fence, tiltable from 90° to 45°
- Handwheel allows easy adjustment of chip removal
- Solid construction eliminates vibrations



The solid planing unit features a precisely bedded spiral cutter head to guarantee best results.



Quick and easy adjustment of chip removal (up to 8 mm).

BERNARDO®
www.bernardo.at
SEMIPROFESSIONAL



NEW

**Spiral cutter head
as standard**

Standard accessories:

- Spiral cutter head with 28 pcs. TCT-blades
- Replacement TCT-blades (5 pcs.)
- 2 x push handle

Technical data	SP 150 PS
Planing width	150 mm
Table length	1230 mm
Table height	820 mm
Infeed table length	590 mm
Outfeed table length	585 mm
Planer fence	740 x 100 mm
TCT-blades	28 pcs.
Planer shaft diameter	60 mm
Shaft rotation speed	4500 rpm
Max. cutting depth	8 mm
Dust extraction outlet	100 mm
Motor power output S ₁ 100%	1,1 kW (1,5 HP)
Motor power input S ₆ 40%	1,5 kW (2,0 HP)
Voltage	230 V or 400 V
Machine dimension (L x W x H)	1230 x 530 x 1180 mm
Weight approx.	115 kg
Art. no.	08-10132 (230 V) 08-10133 (400 V)

Optional accessories:

TCT-blades for spiral cutter (10 pcs.)
Spare screws of spiral cutter blade (10 pcs.)
Torque wrench 6 Nm
PU-tube diam. 100 mm (6 m)
Dust collector DC 230 E / 230 V with tube (2,5 m)
Universal mobile base UF 300

Art. no.	excl. VAT
15-1078	
15-1079	
15-1080	
12-1077	
12-2043	
56-1070	

BERNARDO®
www.bernardo.at

For your closest dealer, contact us at www.bernardo.at

Surface planing machine **SP 200 PN**

The planing machine SP 200 PN is designed for accurate planing, jointing and chamfering of boards, planks etc. at entry level. The heavy cast iron frame and precise construction meet the requirements of ambitious amateurs and craftsmen.

- Cutterblock features HSS-planing knives
- Ideal for planing of boards, planks etc.
- Most accurate grey cast iron planing tables guarantees excellent results
- Extremely long planing tables with ground surface assure perfectly smooth results
- On/Off button with undervoltage release
- Solid cast iron planing fence, tiltable from 90° to 45°
- Handwheel allows easy adjustment of chip removal
- Solid construction eliminates vibrations



Several protective devices ensure high user safety.



Handwheel allows easy adjustment of chip removal

BERNARDO
SEMIPROFESSIONAL

NEW



The planing fence features a solid tilting device including adjustable end stops



VOLTAGE

Alternatively in
230 V or 400 V

Technical data

SP 200 PN

Planing width	200 mm
Table length	1785 mm
Table height	840 mm
Infeed table length	870 mm
Outfeed table length	870 mm
Planer fence	1010 x 120 mm
Cutter knives	4 pcs.
Planer shaft diameter	72 mm
Shaft rotation speed	4800 rpm
Max. cutting depth	8 mm
Dust extraction outlet	100 mm
Motor power output S ₁ 100%	1,5 kW (2,0 HP)
Motor power input S ₆ 40%	2,2 kW (3,0 HP)
Voltage	230 V or 400 V
Machine dimension (L x W x H)	1785 x 640 x 1200 mm
Weight approx.	183 kg
Art. no.	08-10140 (230 V) 08-10141 (400 V)

Standard accessories:

- Cutter knives in HSS-Quality
- Knife gauge
- 2 x push handle

4-knife cutter-block as standard

Optional accessories:

Cutter knives 205 x 17 x 2,5 mm, price per pc.
PU-tube diam. 100 mm (6 m)
Dust collector DC 230 E / 230 V with tube (2,5 m)
Universal mobile base UF 300

Art. no. excl. VAT

15-0988
12-1077
12-2043
56-1070

Surface planing machine with spiral cutter head

SP 200 PS

- Reduction of noise level (approx. 50%) due to the standard spiral cutter head and up to 20 times the cutting edge life (results from four-way carbide inserts)
- Advantage of the carbide inserts: If damaged, individual knives can be exchanged or turned
- Ideal for planing of boards, planks etc.
- The carbide blades ensure tear-free planing results and optimal surfaces with any type of wood
- Most accurate grey cast iron planing tables guarantees excellent results
- Extremely long planing tables with ground surface assure perfectly smooth results
- On/Off button with undervoltage release
- Solid cast iron planing fence, tiltable from 90° to 45°
- Handwheel allows easy adjustment of chip removal
- Solid construction eliminates vibrations



The solidly built, up to 45° tiltable planer fence can easily be adjusted.

NEW



The solid planing unit features a precisely bedded spiral cutter head to guarantee best results.

Planer fence
made of cast iron

Spiral cutter head
as standard

VOLTAGE

Alternatively in
230 V or 400 V



Technical data

SP 200 PS

Planing width	200 mm
Table length	1785 mm
Table height	840 mm
Infeed table length	870 mm
Outfeed table length	870 mm
Planer fence	1010 x 120 mm
TCT-blades	36 pcs.
Planer shaft diameter	72 mm
Shaft rotation speed	4800 rpm
Max. cutting depth	8 mm
Dust extraction outlet	100 mm
Motor power output S ₁ 100%	1,5 kW (2,0 HP)
Motor power input S ₆ 40%	2,2 kW (3,0 HP)
Voltage	230 V or 400 V
Machine dimension (L x W x H)	1785 x 640 x 1200 mm
Weight approx.	183 kg
Art. no.	08-10142 (230 V) 08-10143 (400 V)

Standard accessories:

- Spiral cutter head with 36 pcs. TCT-blades
- Replacement TCT-blades (5 pcs.)
- 2 x push handle

Optional accessories:

TCT-blades for spiral cutter (10 pcs.)
Spare screws of spiral cutter blade (10 pcs.)
Torque wrench 6 Nm
PU-tube diam. 100 mm (6 m)
Dust collector DC 230 E / 230 V with tube (2,5 m)
Universal mobile base UF 300

Art. no.	excl. VAT
15-1078	
15-1079	
15-1080	
12-1077	
12-2043	
56-1070	

BERNARDO
SEMIPROFESSIONAL

BERNARDO
www.bernardo.at

For the most up to date information please visit www.bernardo.at

Thicknesser

TH 330

The TH 330 is a compact and easily transported planer and thicknesser, making this model ideal for use on construction sites. The planer unit - guided on four threads - and the rubber coated in- and outfeed roller for safe workpiece feed, guarantees the most accurate planing results.

- Handwheel and scale allow for precise adjustment of chip removal
- Rubber-coated in- and outfeed roller for consistent workpiece feed and quality finish
- Foldable table extensions keep required space to a minimum
- Optimal for planing of boards, beams and planks
- Includes dust hood at the back of machine
- Handles on the side allow for easy transportation
- Precisely bedded 2-knife cutterblock with HSS cutter knives
- Planing unit is guided fourfold to guarantees precise results
- Automatic workpiece infeed (8 m/mm)



Serially equipped with extraction outlet for dust collector.



Fourfold guided thickening table for exact planing of boards, blocks, planks,...



Optional accessories:

Set of planer knives in HSS-quality (2 pcs.) 15-1068

Art. no.

excl. VAT

**Best
price**

Technical data

TH 330

Working width	330 mm
Working height min./max.	5 - 150 mm
Table size with extension	640 x 330 mm
Max. cutting depth	2,8 mm
Working length min.	140 mm
Planer shaft diameter	50 mm
Cutter knives	2 pcs.
Shaft rotation speed	9500 rpm
Feed speed	8 m/min
Dust extraction outlet	50 / 100 mm
Motor power output S ₁ 100%	1,5 kW (2,0 HP)
Motor power input S ₆ 40%	2,1 kW (2,8 HP)
Voltage	230 V
Machine dimension (L x W x H)	550 x 650 x 490 mm
Weight approx.	33 kg
Art. no.	08-1012

Equipped in standard accessories:
Table extension with rolls.

Standard accessories:

- Cutter knives in HSS-quality
- Foldable table extensions with rolls



Thicknesser

DH 310

The DH 310 thickening machine was developed with a focus on safety, stability, compact construction and user-friendliness. Furthermore this model features a digital display for precise thickening table adjustment.

- Precisely bedded, smooth running 4-knife cutterblock guarantees optimal results
- Thickening table with central column and support allow precise planing
- Digital display on handwheel features 1/10 mm scaling for precise adjustment of thickening table
- Noise-reducing cutterblock cover keeps noise levels down
- Ground thickening table for workpieces up to 230 mm in height
- Serially with table extension with integrated rolls
- Chain drive allows safe and consistent workpiece infeed
- Large anti-kickback devices eliminate ejection of workpieces
- Several safety devices: On/Off switch with undervoltage release, limit switch to avoid accidental machine start, emergency-stop switch



The precisely bedded 4-knife cutterblock and the straight-toothed of the infeed roller ensure top work results.



Solid thickening table with spindle guide and support for accurate planing of board, slats, planks etc.



The chain drive ensures consistency of infeed and outfeed rollers.



Tables can be adjusted precisely - 1/10 mm - using the digital display.



Technical data

DH 310

Working width	310 mm
Working height min./max.	5 - 230 mm
Table size	930* x 310 mm
Max. cutting depth	5 mm
Working length min.	150 mm
Planer shaft diameter	95 mm
Cutter knives	4 pcs.
Shaft rotation speed	4050 rpm
Feed speed	6 m/min
Dust extraction outlet	100 mm
Motor power output S ₁ 100%	2,2 kW (3,0 HP)
Motor power input S ₆ 40%	3,0 kW (4,0 HP)
Voltage	400 V
Machine dimension (W x D x H)	1110 x 600 x 1020 mm
Weight approx.	180 kg
Art. no.	08-1094

* with table extension

Standard accessories:

- Cutter knives in HSS-quality
- Knife gauge
- Digital indication for thickening table adjustment
- Table extension with rolls

Optional accessories:

Cutter knives 310 x 30 x 3 mm, price per pc.
Dust collector DC 400 / 400 V
Dust collector DC 500 E / 400 V
PU-tube diam. 100 mm (6 m)
Universal mobile base UF 300
Automatic start-up ALV 10 / 1 M
Lubricant 1 kg, paste

Art. no.	excl. VAT
15-1005	
12-2060	
12-2066	
12-1077	
56-1070	
12-1150	
54-1000	

BERNARDO
SEMIPROFESSIONAL

BERNARDO
www.bernardo.at

You are welcome to request our current special offer catalogue at www.bernardo.at

Thicknesser with spiral cutter head

DH 310 S

- Reduction of noise level (approx. 50%) due to the standard spiral cutter head and up to 20 times the cutting edge life (results from four-way carbide inserts)
- Advantage of the carbide inserts: If damaged, individual knives can be exchanged or turned
- Thicknessing table with central column and support allow precise planing
- The carbide blades ensure tear-free planing results and optimal surfaces with any type of wood
- Ground thicknessing table for workpieces up to 230 mm in height
- Serially with table extension with integrated rolls
- Chain drive allows safe and consistent workpiece infeed
- Several safety devices: On/Off switch with undervoltage release, limit switch to avoid accidental machine start, emergency-stop switch



The precisely bedded spiral cutter head and the straight toothed of the infeed roller ensure top work results.



Solid thicknessing table with spindle guide and support for accurate planing of board, slats, planks etc.



The chain drive ensures consistency of infeed and outfeed rollers.



Tables can be adjusted precisely - 1/10 mm - using the digital display.



NEW

BERNARDO
SEMIPROFESSIONAL

Technical data

DH 310 S

Working width	310 mm
Working height min./max.	5 - 230 mm
Table size	930* x 310 mm
Max. cutting depth	5 mm
Working length min.	150 mm
Planer shaft diameter	95 mm
TCT-blades	52 pcs.
Shaft rotation speed	4050 rpm
Feed speed	6 m/min
Dust extraction outlet	100 mm
Motor power output S ₁ 100%	2,2 kW (3,0 HP)
Motor power input S ₆ 40%	3,0 kW (4,0 HP)
Voltage	400 V
Machine dimension (W x D x H)	1110 x 600 x 1020 mm
Weight approx.	180 kg
Art. no.	08-1096

* with table extension

Standard accessories:

- Spiral cutter head with 52 pcs. TCT-blades
- Replacement TCT-blades (5 pcs.)
- Digital indication for thicknessing table adjustment
- Table extension with rolls

Optional accessories:

- TCT-blades for spiral cutter (10 pcs.)
- Spare screws of spiral cutter blade (10 pcs.)
- Torque wrench 6 Nm
- Dust collector DC 400 / 400 V
- Dust collector DC 500 E / 400 V
- PU-tube diam. 100 mm (6 m)
- Universal mobile base UF 300
- Automatic start-up ALV 10 / 1 M
- Lubricant 1 kg, paste

Art. no.	excl. VAT
15-1078	
15-1079	
15-1080	
12-2060	
12-2066	
12-1077	
56-1070	
12-1150	
54-1000	

Thicknesser

DH 410

The DH 410 thickening machine was developed with a focus on safety, stability, compact construction and user-friendliness. Furthermore this model features a digital display for precise thickening table adjustment.

- Precisely bedded, smooth running 4-knife cutterblock guarantees optimal results
- Thickening table with central column and support allow precise planing
- Digital display on handwheel features 1/10 mm scaling for precise adjustment of thickening table
- Noise-reducing cutterblock cover keeps noise levels down
- Ground thickening table for workpieces up to 230 mm in height
- Serially with table extension with integrated rolls
- Chain drive allows safe and consistent workpiece infeed
- Large anti-kickback devices eliminate ejection of workpieces
- Several safety devices: On/Off switch with undervoltage release, limit switch to avoid accidental machine start, emergency-stop switch



The precisely bedded 4-knife cutterblock and the straight-toothed of the infeed roller ensure top work results.



Solid thickening table with spindle guide and support for accurate planing of board, slats, planks etc.



The chain drive ensures consistency of infeed and outfeed rollers.



Tables can be adjusted precisely - 1/10 mm - using the digital display.



Technical data

DH 410

Working width	410 mm
Working height min./max.	5 - 230 mm
Table size	930* x 410 mm
Max. cutting depth	5 mm
Working length min.	150 mm
Planer shaft diameter	95 mm
Cutter knives	4 pcs.
Shaft rotation speed	4050 rpm
Feed speed, stepless	6 m/min
Dust extraction outlet	100 mm
Motor power output S ₁ 100%	3,0 kW (4,0 HP)
Motor power input S ₆ 40%	4,2 kW (5,7 HP)
Voltage	400 V
Machine dimension (W x D x H)	1110 x 710 x 1020 mm
Weight approx.	239 kg
Art. no.	08-1107

* with table extension

Standard accessories:

- Cutter knives in HSS-quality
- Knife gauge
- Digital indication for thickening table adjustment
- Table extension with rolls

Optional accessories:

Cutter knives 410 x 30 x 3 mm, price per pc.	15-1016
Dust collector DC 400 / 230 V	12-2055
Dust collector DC 500 E / 400 V	12-2066
PU-tube diam. 100 mm (6 m)	12-1077
Universal mobile base UF 300	56-1070
Automatic start-up ALV 10 / 1 M	12-1150
Lubricant 1 kg, paste	54-1000

BERNARDO
SEMIPROFESSIONAL

Art. no. excl. VAT

BERNARDO
www.bernardo.at

Should you have any questions, please feel free to contact our service center +43 / 732 / 664015

Thicknesser

TP 410 N

The TP 410 N thicknesser is serially equipped with a stepless variator gearbox, allowing to adjust the infeed speed to the workpiece. Furthermore this model features a digital display for precise thickening table adjustment.

- Variator gearbox allows stepless infeed speed adjustment from 5 - 7 m/min
- Digital display with an accuracy of 1/10 mm on the handwheel for precise adjustment of thickening table
- Ground thickening table, height adjustment by handwheel
- Table with central column and support to guarantees most accurate results
- Chain drive allows safe and consistent workpiece infeed
- Solid cutterblock for precise results
- Power switch includes undervoltage release

BERNARDO
SEMIPROFESSIONAL



Ground thickening table for workpieces up to 225 mm in height. The set height can be read on the digital indication.



The torsion-free thickening table is guided on a central column with support.



The infeed is driven by a solid chain drive. The infeed speed is 5 - 7 m/min.



The planing unit features a 70 mm cutterblock to guarantees most accurate results.



Digital readout for
thickening table adjustment

Variable
feeding speed

NEW

Technische Daten

TP 410 N

Working width	406 mm
Working height min./max.	5 - 225 mm
Table size	600 x 406 mm
Max. cutting depth	4 mm
Working length min.	125 mm
Planer shaft diameter	70 mm
Cutter knives	3 pcs.
Shaft rotation speed	5500 rpm
Feed speed, stepless	5 - 7 m/min
Dust extraction outlet	100 mm
Motor power output S ₁ 100%	3,0 kW (4,0 HP)
Motor power input S ₆ 40%	4,2 kW (5,7 HP)
Voltage	400 V
Machine dimension (W x D x H)	750 x 680 x 1005 mm
Weight approx.	160 kg
Art. no.	08-1104

Standard accessories:

- Cutter knives in HSS-quality
- Knife gauge
- Digital indication for thickening table adjustment
- Stepless infeed

Optional accessories:

Cutter knives 410 x 25 x 3 mm, price per pc.
Planer knives adjustment HML
Dust collector DC 500 E / 400 V
PU-tube diam. 100 mm (6 m)
Universal mobile base UF 300
Lubricant 1 kg, paste
Automatic start-up ALV 10 / 1 M

Art. no.	excl. VAT
15-1017	
08-1500	
12-2066	
12-1077	
56-1070	
54-1000	
12-1150	

Thicknesser with spiral cutter head

DH 410 S

- Reduction of noise level (approx. 50%) due to the standard spiral cutter head and up to 20 times the cutting edge life (results from four-way carbide inserts)
- Advantage of the carbide inserts: If damaged, individual knives can be exchanged or turned
- Thicknessing table with central column and support allow precise planing
- The carbide blades ensure tear-free planing results and optimal surfaces with any type of wood
- Ground thicknessing table for workpieces up to 230 mm in height
- Serially with table extension with integrated rolls
- Chain drive allows safe and consistent workpiece infeed
- Several safety devices: On/Off switch with undervoltage release, limit switch to avoid accidental machine start, emergency-stop switch



The precisely bedded spiral cutter head and the straight toothed of the infeed roller ensure top work results.



Solid thicknessing table with spindle guide and support for accurate planing of board, slats, planks etc.



The chain drive ensures consistency of infeed and outfeed rollers.



Tables can be adjusted precisely - 1/10 mm - using the digital display.



NEW

BERNARDO
SEMIPROFESSIONAL

Standard accessories:

- Spiral cutter head with 72 pcs. TCT-blades
- Replacement TCT-blades (5 pcs.)
- Digital indication for thicknessing table adjustment
- Table extension with rolls

Optional accessories:

	Art. no.	excl. VAT
TCT-blades for spiral cutter (10 pcs.)	15-1078	
Spare screws of spiral cutter blade (10 pcs.)	15-1079	
Torque wrench 6 Nm	15-1080	
Dust collector DC 400 / 230 V	12-2055	
Dust collector DC 500 E / 400 V	12-2066	
PU-tube diam. 100 mm (6 m)	12-1077	
Universal mobile base UF 300	56-1070	
Automatic start-up ALV 10 / 1 M	12-1150	
Lubricant 1 kg, paste	54-1000	

Technical data

DH 410 S

Working width	410 mm
Working height min./max.	5 - 230 mm
Table size	930* x 410 mm
Max. cutting depth	5 mm
Working length min.	150 mm
Planer shaft diameter	95 mm
TCT-blades	72 pcs.
Shaft rotation speed	4050 rpm
Feed speed, stepless	6 m/min
Dust extraction outlet	100 mm
Motor power output S ₁ 100%	3,0 kW (4,0 HP)
Motor power input S ₆ 40%	4,2 kW (5,7 HP)
Voltage	400 V
Machine dimension (W x D x H)	1110 x 710 x 1020 mm
Weight approx.	239 kg
Art. no.	08-1108

* with table extension

BERNARDO
www.bernardo.at

For technical requests you can reach us by e-mail at service@pwa.at

Thicknesser

TP 630 D

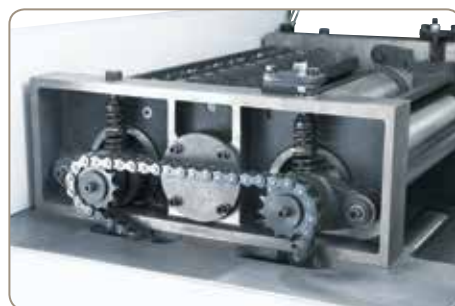
- Ergonomically arranged switches and control elements on the front of the machine
- Solid thickening table serially equipped with two driven infeed rollers
- Stepless infeed speed adjustment 5 - 18 m/min
- Torsion-free, grey cast iron construction assures a smooth run
- Thickening table adjustment features digital display with 1/10 mm accuracy
- Quick and easy motorized height adjustment of thickening table
- Serially equipped with 2 dust extractor outlets Ø 150 mm
- Adjustable thickening table rollers allow planing of wet or rough wood
- Noise-absorbing cutterblock cover minimizes noise
- Large anti-kickback devices eliminate kickback of workpieces



To assure consistent workpiece infeed, the thickening table features two precisely adjustable rollers.



The solid planing unit features a precisely bedded 4-knife cutterblock to guarantee accurate results, even during heavy workload.



The chain drive ensures consistency of infeed and outfeed rollers.



The solid, grey cast iron thickening table features a motorized height adjustment 4 - 300 mm. The height adjustment takes place by four large guide arbors, the guideway with four precision flat guidings is designed for heavy workload.



Segmented infeed roller and pressure bar allow simultaneous planing of workpieces with different thicknesses.



For accurate planing results, the feed speed of the infeed and outfeed roller can be adjusted to the workpiece using the frequency converter.

Technical data

TP 630 D

Working width	630 mm
Working height min./max.	4 - 300 mm
Table size	1200 x 630 mm
Thickening rollers	2 pcs.
Max. cutting depth	10 mm
Workpiece length min.	300 mm
Planer shaft diameter	120 mm
Cutter knives	4 pcs.
Shaft rotation speed	5000 rpm
Feed speed, stepless	5 - 18 m/min
Dust extraction outlet	2 x 150 mm
Motor power output S ₁ 100%	7,5 kW (10,0 HP)
Feeding motor	1,5 kW (2,0 HP)
Elevating motor	0,37 kW (0,50 HP)
Machine dimension (W x D x H)	1150 x 1240 x 1500 mm
Weight approx.	1250 kg
Art. no.	08-1126

The TP 630 D thickening machine was developed with a focus on safety, stability, compact construction and user-friendliness. The large variety of standard accessories make this model excellent in price-performance ratio.

TP 630 D



The ergonomically arranged switches and control elements, features a digital display for the thickening table adjustment.

Electronic thickening table positioning



Serially with electronic thickening table positioning by keypad and digital readout.



Thickener rollers serially

Segmented infeed roller

Standard accessories:

- Cutter knives in HSS-quality
- 1 driven thickening table roller
- Segmented infeed roller
- Digital display for thickening table adjustment
- Thickening table clamping
- 2 dust extractor outlets Ø 150 mm
- Stepless infeed speed
- Thickening table guided on 4 guide bars
- Motorized table height adjustment

Stepless feeding speed

BERNARDO®
www.bernardo.at
PROFESSIONAL

BERNARDO®
www.bernardo.at

For your closest dealer, contact us at www.bernardo.at

Your dealer



PWA Handelsges.m.b.H.

4020 Linz | Nebingerstraße 7a | Austria
phone: +43.732.66 40 15 | fax: +43.732.66 40 15-9
e-mail: bernardo@pwa.at | www.bernardo.at

Imprint:

All rights reserved – reproduction of images or texts or parts of these is strictly prohibited unless prior arrangements are made. Subject to technical and optical amendments. Product specifications subject to change without notice. Not responsible for printing errors or mistakes. Machines are partly displayed with optional extras. Prices subject to change. Prices in Euros, ex works (Linz, Austria), excl. any taxes. Edition 03/2022.